

Flea Facts

Fleas prefer warm, humid conditions and are often a summer pest.

Eggs are laid loosely on the host animal (usually domestic cats and dogs) and drop off the host body in areas where frequented. This is why some people think that they are sand fleas.

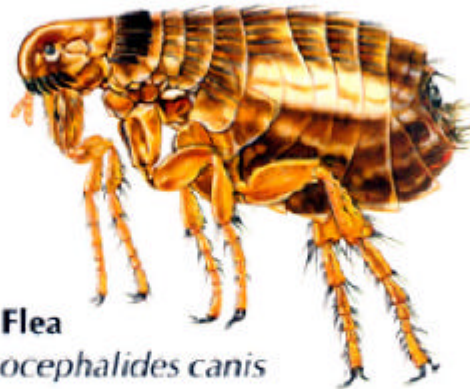
Fleas can remain dormant in the pupa stage for up to a year waiting for a blood meal.

Fleas prefer specific hosts such as

cat flea	Found on cats
dog flea	Found on dogs

however if their preferred host is not available then they will feed on any other warm blooded animal.

Adult fleas excrete undigested blood as an extra food source for their young.



Dog Flea
Ctenocephalides canis
2.6mm

—

"What problems does a flea plague cause?"

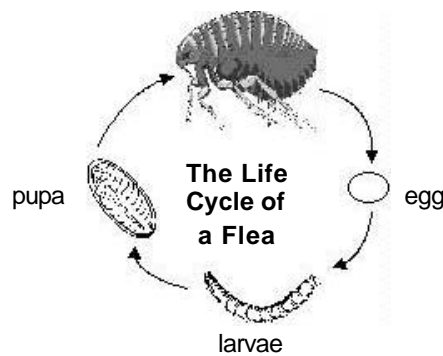
Fleas are wingless with legs equipped with claws, which enables them to jump onto the host animal extremely well. They are equipped with piercing sucking mouthparts.

The habit of biting (piercing and sucking) people can cause mild to severe irritation or transmit diseases such as

Murine or endemic typhus
Plague

It is also likely that fleas play a large role in the transmission of tapeworms through ingestion or inhaling the eggs.

Fleas inject saliva containing anti-coagulants that causes irritation which may last for days.



"So What can I do?"

Try the following tips

Hygiene

Wash animals thoroughly to remove any adult fleas or eggs.

Thoroughly vacuum and clean to remove eggs and larvae.

Reducing rodent problems will help stop fleas from establishing their presence in the home.

Chemical Control

The host animal must be treated at the same time as the premises.

All areas, which are affected or used by the host animal, must be thoroughly cleaned prior to chemical application

Effective flea control is often well directed application of insecticide.

Only use insecticides recommended for flea control and be sure to use them in accordance with the label.

Pesticides.

Surface sprays are ideal for treating large surface areas but care should be taken when choosing which insecticide to use.

Ideally use a surface spray specifically manufactured for flea control. Check the label as some are designed to control the flea larvae also.

This will help in controlling the adult and larval stage of the flea.

Space sprays or bombs containing the same insecticides, as surface sprays should be used with caution, as the fine mist emitted by them will settle on all exposed surfaces. Ensure that all foodstuffs and utensils are covered or put away prior to any treatments

